

○ Standard configuration

Engine

- L, S and B mode control
- 24V/3.2kW starter motor
- 30A alternator
- Air prefilter
- Dry type dual-element air filter
- Cylinder-type engine oil filter
- Cylinder-type fuel oil fine filter
- Fuel oil coarse filter
- Radiator with protective screening
- Radiator auxiliary water tank
- Fan aerofoil
- Isolated mounted engine
- Oil-water separator

Hydraulic system

- Control valve with main overflow valve
- Spare oil port of control valve
- Oil suction filter
- Return oil filter
- Pilot filter

Slewing platform of superstructure

- Fuel oil level floater
- Hydraulic oil level gauge
- Tool kit
- Slewing parking brake
- Rearview mirror (right)
- Grease bucket holder
- Counter weight

Alarm

- Engine oil pressure too low
- Fuel oil level too low
- Coolant temperature too high (please clean the radiator)
- Air filter restriction
- Engine racing
- Voltage too low
- Voltage too high

Cab

- Sound-proof steel-structure cab
- Reinforced light-color glass window
- 4 silicone oil rubber damper supports
- Openable front wall upper window and left side window
- Emergency exit on rear window
- Wiper with washer
- Adjustable tilting seat with adjustable armrest
- AM-FM radio with digital clock
- Foot rest and floor mat
- Loudspeaker and rearview mirror
- Seat belt and fire extinguisher
- Cup holder and compartment lamp
- Ashtray and escape hammer
- Cigar lighter and sundries box
- Pilot controlled cut-off lever
- Fully-automatic air conditioner

Air conditioning system

- Dual-purpose air conditioner (imported high-quality)
- A/C control panel
- Fresh air inlet system (fresh air exchanging function)

Indicator lamp

- Engine preheating
- High/low traveling speed
- Storage battery charging
- Failure alarm indicator
- Voltage too high/too low
- Program download & communication

Others

- Standard storage battery
- Lockable engine hood
- Lockable fuel filler cap
- Anti-slip sticker for armrest
- Traveling direction sign on traveling carriage
- Working lamp

Traveling body of undercarriage

- Traveling parking brake
- Traveling motor guard plate
- 4 Hydraulic tensioning device of tracks
- Bolted driving wheel
- Thrust wheel and carrier wheel
- 400mm triple track shoes
- Reinforced caterpillar track with pin shaft seal
- Bottom cover plate

Front-end working device

- Flange pin
- Welded connecting rod
- All bucket pins are equipped with dustproof seal ring
- 3.72m reinforced all-welded box-type boom
- 1.62m reinforced all-welded box-type bucket rod

Instruments of monitoring system

- Liquid crystal control monitor
- Automatic idling system
- Failure diagnosis and alarm system
- Hour meter and fuel tank oil level gauge
- Engine coolant temperature
- Engine oil pressure indication



SY75C

Fully upgraded new-generation excavator

Brand new change

TOP SALES MACHINE ASSET OF GREAT VALUE

Lead by Innovation Splendid SANY

- Rated power 43kW/2100rpm
- Operation weight 7280kg
- Bucket capacity 0.28m³



Shanghai SANY Heavy Machinery Co., Ltd.
Address: Shanghai SANY Heavy Machinery
Industrial Park, Ping'an Town, Fengxian
District, Shanghai City, China
www.sany.com.cn

Note

This is a sample and is only for reference. All configuration shall be subject to the contract or material object, and may be changed without further notice.
All Rights Reserved! No contents in the sample shall be duplicated or copied for any purposes without written approval of SANY Heavy Machinery.

SY75C

Sales Champion Mini-excavator Leader

New-generation
SY75C Hydraulic Excavator



Selling Points

SY75C is a star product of mini-excavator of SANY. It occupies over 30% of market share in single model market for 5 continuous years. More than 20,000 excavators have been sold to over 100 countries. New-generation SY75C hydraulic excavator features "high reliability, excellent performance, safe & environmental-friendly and comfortable & convenient". Meanwhile, several kinds of special configuration are available for option and can satisfy the demands of different countries and customers. SANY Heavy Machinery is striving to improve customer's investment value as the target and provides valuable products continuously for the customers.



High reliability



Excellent performance



Safe & environmental-friendly



Comfortable & convenient



Special configuration

High reliability

○ Highest reliability in the industry

Reliability

- SY75C is improved on aspects of structural member reinforcement and low failure rate etc. Overall reliability leads in the industry.



○ Top-ranking core configuration

Core configuration

- Isuzu engine meeting emission standard national III exclusively for SANY could ensure the operating reliability of the machine under severe conditions.
- Kawasaki main pump, HUSCO main valve and hydraulic components from world famous brands ensure high reliability of hydraulic system.
- Reinforced structural members with brand-new design have longer service life.



○ Top-ranking core configuration

Power system

- Standard air prefilter is used to effectively filter impurities in the air, extend the life of the air filter, protect the engine, and extend the service life.



Power system

- 7" large-sized high-precision air filter as standard configuration; filter precision is up to 99.9%.
- Large capacity design, long service life and low maintenance cost.
- Electronic alarm device, which is safe and effective.



Power system

- Large-sized high-precision fuel oil coarse filter+ fuel oil fine filter as standard configuration; double protection, higher filtering efficiency; with long life design, service life is doubled.
- Filter precision of coarse filter is 4 μ m, filter precision of fine filter is 5 μ m; they could filter out micro contaminants invisible to the naked eyes for ensuring safe use of the engine.



○ Reinforced structural members

Boom

- Side plate and bottom plate of the boom are thickened, and reinforcing plate is installed additionally inside to make the boom stronger.
- Boom pin shaft is mounted by way of pressing plate which is easy to be installed and works reliably.



Side plate is thickened comprehensively by

Bottom plate is thickened by 2mm

○ Reinforced structural members

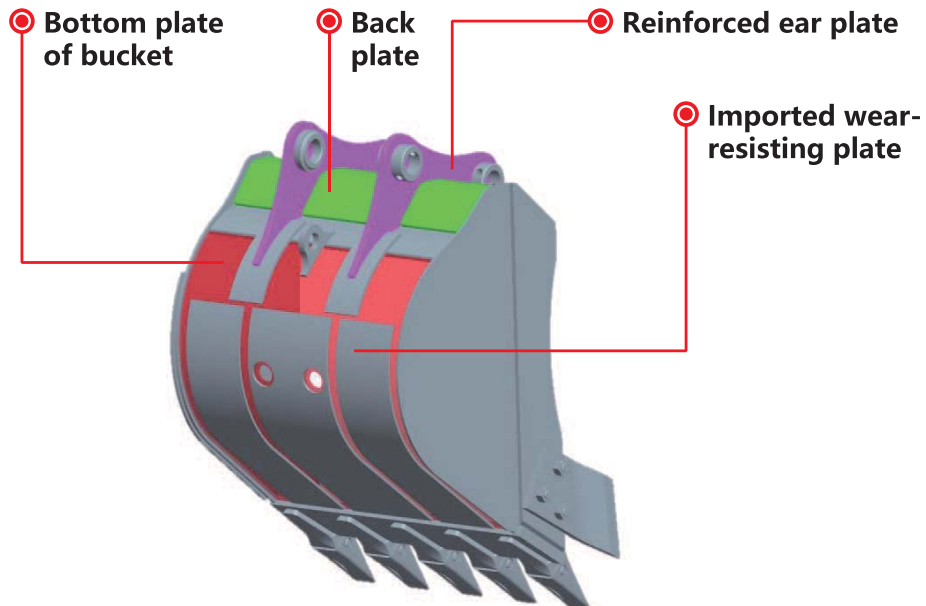
Bucket rod

- Front end of bucket rod is equipped with wear-resisting plate as reinforcing plate so that its service life is longer.
- Front end face of bucket rod is treated with new tungsten carbide process so that its wear resistance is double.



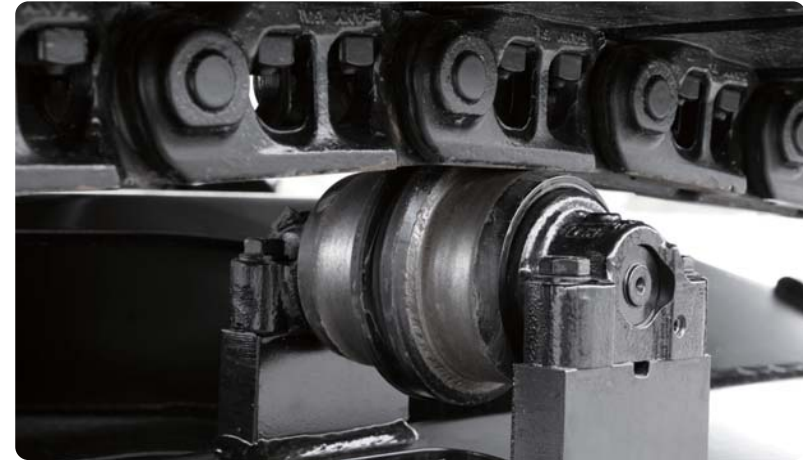
Bucket

- The bucket is equipped with imported wear-resisting plate as bottom plate, and reinforced back plate and ear plate so that its service life is improved by over 50%.



Undercarriage

- Carrier wheel is replaced by thrust wheel, which is done for the first time in the industry. The service life is doubled.
- The fixture of carrier wheel is reinforced on both sides so that the structure is more sturdy, durable and reliable.



- Large-size reinforced bulldozing plate is equipped as standard configuration and works with the bucket to adapt to various working conditions easily.



○ Complete research, development and test system

Test system

- Complete research, development and test system is the strong backup for excellent performance.
- It has established complete machine endurance test center with full functions. Each model of excavator must be subjected to over 2,000h field excavating test.
- Important parts and components like working device, cab and hydraulic components etc. must be subject to fatigue test over 800,000 times.



○ Leading manufacturing technology

Manufacturing technology

- Leading manufacturing technology is a reliable guarantee for producing excellent products .
- SANY has RGV assembling line and full-automatic welding robots, and possesses high-precision machining equipment and precise machining center.
- SANY' s manufacturing and assembling lines won five-star national site in 2013 and national quality award in 2014.



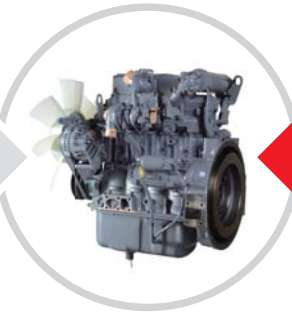
Excellent performance

More powerful

Engine

- Isuzu 4LE2X engine exclusive for SANY is used. The power is strong and the performance is reliable.

Isuzu engine
exclusively for SANY



Advantages of Isuzu engines:

- They are widely used and well recognized by the customers
- It is sturdy, durable and fuel-saving, is fitted with low-cost spare parts and is convenient for maintenance. It should be the first choice for the excavator!!

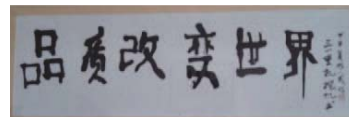
More perfect operation

Load-sensitive

- SANY utilizes load-sensitive system which features higher operating efficiency, better control performance, excellent leveling capacity and outstanding microoperation performance and is capable of providing almost perfect operating feeling.

	SY75C	Others
Hydraulic system	Load-sensitive system	Triple-pump throttling system
System characteristics	Able to sense tiny change of the load and adjust flow and pressure from time to time for realizing perfect control performance	Unable to adjust the flow according to the demand of the system for flow
Advantages and disadvantages	Movement speed is irrelevant to the load	Single movement; it consumes much energy when operating finely

Advantages of load-sensitive system:
Think what you desire, just like your hands!



Calligraphy work by SY75C

Lower energy consumption and higher efficiency

Fuel consumption and efficiency

- Fuel consumption is lower by over 10.9% and the efficiency is higher by over 7.7% as compared with the competitor models.
- It could load 20 more trucks in one shift and load more 5,000 trucks in one year (rear eight wheels).
- It would save nearly 10 thousand RMB for fuel easily in one year.



Higher digging force

Force comparison

- With more force than the competitor product of same tonnage, it is easier to excavate hard pan and makes excavation easier.



Safe and environmental-friendly

○ Safety configuration meeting national standard

Safety configuration of national standard

- Meet safety standard of many regions including China, EU and North America etc.
- SY75C cab adopts ROPS and FOPS structural design and is certified with ROPS and FOPS.



Safety facility

- Safety fences on the right of the cab
- Fire extinguisher and escape hammer
- Handrails for getting on the vehicle and large-area rearview mirror
- Seat belt and safety signs
- Safe superstructure pedal



○ Environmental protection standard in world front

Recoverable

- All-metal covering part is used, is recoverable and environmental-friendly; the materials liable to pollution like glass fiber reinforced plastics are not used.

All-metal covering parts are used

SY75C



Environmental protection

- Environment engine is equipped and meets latest standard.
- Aluminum radiator and oil cooler are used.
- Environmental paint is used to minimize environmental pollution.
- Garden-type manufacturing site.



Comfortable and convenient

○ Comfortable Driving • Warm like Home

Comfortable experience

- With high-grade trim parts, wide view, suspended seat, excellent vibration damping and noise reduction performance, the driving experience will be more comfortable.
- Fully-automatic dual-purpose air conditioner outputs air in stereoscopic mode and makes inside climate more comfortable.
- Cigar lighter, ashtray, cup holder, file box and reading lamp all are complete.



○ Maintenance • Within Easy Reach

Convenient maintenance

- Air filter, fuel oil coarse filter, fuel oil fine filter, engine oil filter and pilot filter element are within easy reach and can be maintained very conveniently.
- Large-area covering part is used. After it is opened, daily maintenance can be carried out on the ground; thus the maintenance is convenient and the accessibility is good.



Comfortable experience

- The beautiful and elegant grease bucket holder may be used to carry the grease bucket easily.
- Large-size tool kit may contain maintenance tools conveniently.
- Detachable radiator dust screen is convenient to be washed.



Special configuration

Special configuration

SY75C may be equipped with several different configurations as options and adapt to the demands of different countries and customers .



Bucket rod configuration

- 1.62m standard bucket rod (standard configuration)
- 2.05m lengthened bucket rod (optional configuration)

Track configuration

- 450mm steel track (standard configuration)
- 450mm rubber track (optional configuration)

Bucket configuration

- 0.12m³ narrow bucket (450mm)
- 0.25m³ standard bucket (650mm)
- 0.25m³ reinforced bucket (680mm)
- 0.28m³ standard bucket (720mm)
- 0.28m³ widened bucket (800mm)
- 0.32m³ enlarged bucket (800mm)

Cab configuration

- With air conditioner (standard configuration)
- With alarm lamp and air conditioner (optional configuration)
- With air conditioner and fan (optional configuration)
- Without air conditioner but with fan (optional configuration)

Other special configuration

- Pipelines of quartering hammer and pipeline of quick-change connector
- Fuel oil filling pump
- Battery main switch
- Protective screening for cab
- Traveling alarm lamp



○ Technical specifications

Specifications	
Total weight	7280kg
Bucket capacity	0.28m ³

Engine	
Model	AU-4LE2X
Type	4-cylinder 4-stroke, direct injection, overhead camshaft; water-cooled, with supercharger
Rated power	43kW/2100rpm
Maximum torque	200Nm/1600rpm
Displacement	2.179L

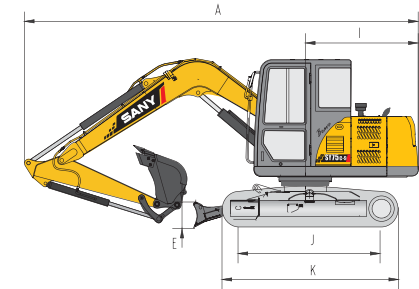
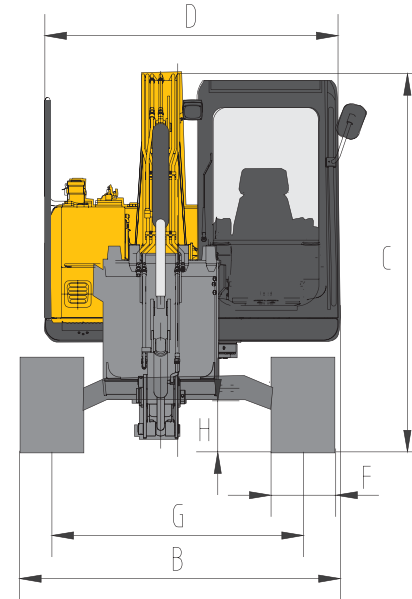
Capacity of oil and coolant	
Fuel tank	150L
Hydraulic oil tank	120L
Engine oil	9.5L
Radiator	6.5L
Final drive	2×1.2L

Main performance	
Traveling speed (high/low)	4.4/2.4(km/h)
Slewing speed	11.5rpm
Gradeability	70% (35°)
Ground pressure	33kPa
Digging force of bucket	56kN
Digging force of bucket rod	38kN

Traveling section	
Number of track shoes	39
Carrier wheel on each side	1
Thrust wheel on each side	5
Standard track	450mm

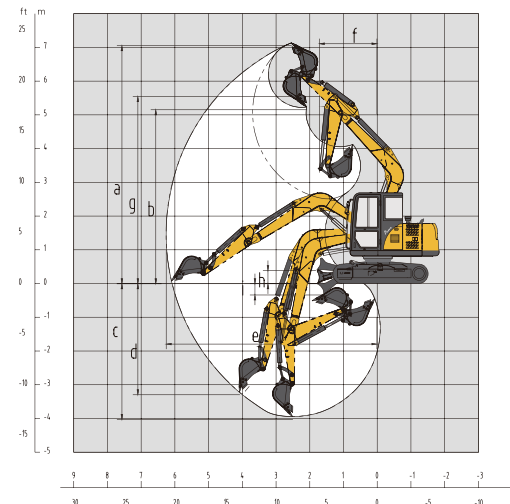


○ Overall dimensions (mm)



Overall dimensions	(Unit: mm)
A Overall length (in transportation state)	6120
B Overall width	2220
C Overall height (in transportation state)	2720
D Upper width	2040
E Height of bulldozing plate	405
F Width of standard track shoe	450
G Track gauge	1750
H Minimum ground clearance	380
I Slewing radius of tail	1800
J Ground contact length of track	2195
K Track shoe length	2820

○ Operating range (mm)



Operating range	(Unit: mm)
a Maximum digging height	7060
b Maximum unloading height	5155
c Maximum digging depth	4020
d Maximum digging depth with vertical boom	3290
e Maximum digging distance	6240
f Maximum slewing radius	1720
g Maximum height at maximum slewing radius	5550
h Maximum ground clearance with bulldozing plate lifted up	350
i Maximum cutting depth of bulldozing plate	360

Quality Changes the World